

Lockdown and beyond: workplace testing

Dido Harding, Interim Executive Chair,
National Institute of Health Protection

11th February 2021

Our progress

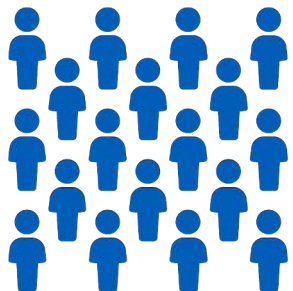
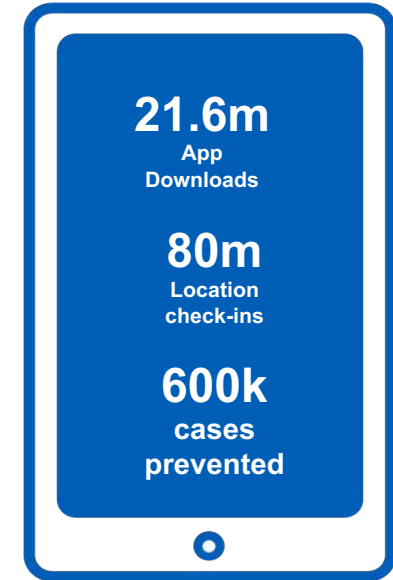
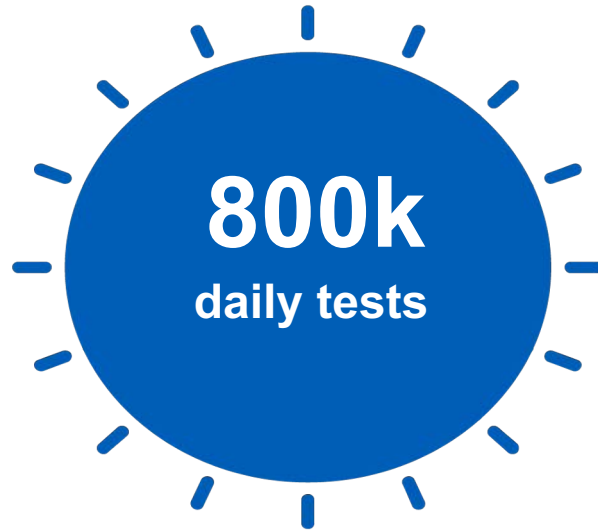
PCR tests returned the next day:

97%

Average distance

819 Test sites

2.1 miles

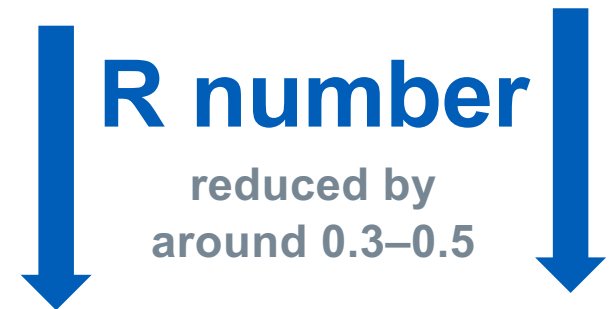


+7m

People contacted to self-isolate



Over 780,000 QR posters displayed and over 100m venue check-ins





- One in three people with Covid-19 do not have symptoms
- LFDs are a fast and simple way to test these people as they may still be spreading the virus
- The test gives you a result in 30 minutes, with no need to use a lab – so ideal to use at scale in the workplace
- LFDs have an overall sensitivity of 76.8% but **detect over 95% of individuals when they are most infectious** – this is why we test twice a week
- They have **99.68%** ‘specificity’ so only about 3 in 1,000 tests give you a ‘false positive’.

Workplace testing: Identifying asymptomatic cases to break chains of infection and keep people working

Scaling asymptomatic testing by employers is one pillar of the overall approach to testing and managing the pandemic. Workers can access testing that is tailored to their situation as follows:

1 Community based testing



**<50
Employees**

- Community testing is led by local authorities (LAs)
- Asymptomatic is being scaled for small businesses, where workers cannot work from home
- Fixed and/or mobile sites are available depending on your LA, for businesses with under 50 employees

2 Institutional testing



**>50
Employees**

- Over 90 companies currently running 244 asymptomatic test sites to test their workforce
- Over 6,000 more businesses have signed up to join
- LFD tests currently funded and provided by NHS T&T (to end March)

3 Home-collect testing



In pilot phase

- Where Asymptomatic Testing Sites (ATS) are not practical and community testing is not available, we are building new approaches to testing
- Pilots are currently underway before the offer is assessed and potentially scaled

Workplace pilots reduce outbreaks and staff absence



Andrew Murphy, Group Operations Director, said “Bosses had seen **lower absence, lower cases, lower spread**. That feels really exciting, if you think about what lateral flow tests ... could do for the country at scale.”

Other key benefits:

- **45,700 tests with employees**
- **Saved 6,643 working days for 2,286 staff members**



Daily swabs saved '**hundreds of thousands of pounds**' and avoided five potential stops in production at its steelworks in Port Talbot, South Wales.

Other key benefits:

- **5,627 checks and around 12,500 work hours have been saved.**



Greg Jackson, CEO and founder of Octopus Energy, said “We started testing in December and it was **so well received by our staff** that we’re continuing it this year.”

- Though testing is voluntary, '**almost 100 per cent**' of staff use the testing facilities’.

Exiting lockdown: A major expansion of asymptomatic testing

As we emerge from lockdown, regular asymptomatic testing using LFDs becomes a critical new habit in helping to stop the spread of Covid

Why LFD testing is important



- Finds the one in three people who are infectious but have no symptoms – including the new variants

R number



- Keeps the R number down
- Avoids future lockdowns

Where we are currently using regular LFD testing:



- NHS and care homes



- Schools, colleges, universities



- Essential workers

LFD testing will become as normal as brushing your teeth as we emerge from lockdown

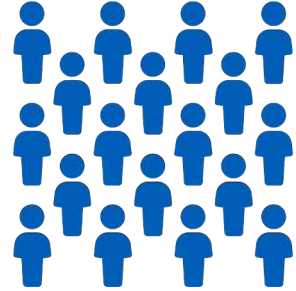


- Not everyone in the population will be vaccinated – so regular LFD testing remains important to keep Covid-19 in check
- Regular testing helps to identify potential hotspots and outbreaks early on including for the new variants
- ‘Surge testing’ to monitor variants
- We carry out more than half of the genome sequencing for Covid in the world. Our New Variant Assessment Platform will support countries without capacity to find new variants and stop the virus crossing borders
- Daily contact testing pilots underway

How we can support you

6,000+

Expressions of interest from companies since Sunday



232



Local authorities now rolling out community testing covering

42m people

2.5m

LFDs distributed across government agencies and private business



Guaranteed

Free LFDs for businesses until the end of March



Further information

Explanatory videos

Videos about testing, as well as feedback from those who took part in the pilots:

An introduction to rapid tests, animated video (1.32 mins)

Prof Louise Kenny, who led the Liverpool mass community pilot, talks about LFDs (6.57 mins)

John Lewis workplace testing (1.34 mins)

Octopus Energy – Greg Jackson (1.25 mins)

Posters and leaflets

COMING SOON: A range of editable posters, leaflets and other assets which can be co-branded, available in 13 different languages. These will be available on the web portal once you register



Insert call to action here

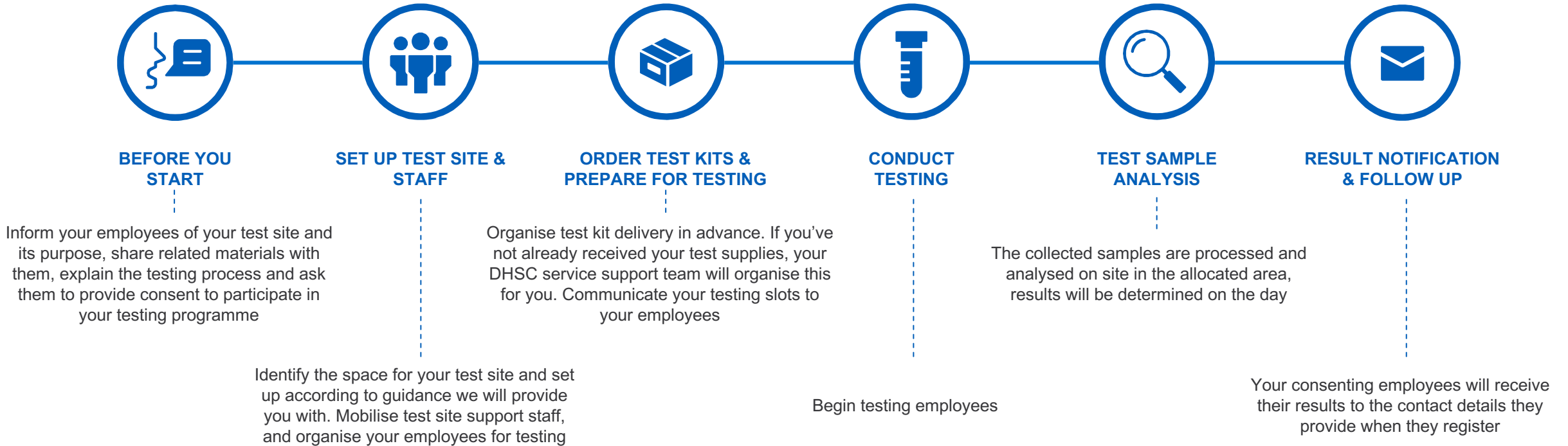
Insert call to action here

Thank you

To register for workplace testing please visit:
www.gov.uk/get-workplace-coronavirus-tests

To find out more about community testing please
visit your local authority website. Postcode checker
available here: [Find out if your area offers rapid
lateral flow test sites - GOV.UK \(www.gov.uk\)](https://www.gov.uk/find-out-if-your-area-offers-rapid-lateral-flow-test-sites)

How to set up a testing site - six stage process



Exiting lockdown: A major expansion in asymptomatic testing

As we emerge from lockdown, regular asymptomatic testing using LFDs becomes a critical new habit in helping to stop the spread of Covid

Why LFD testing is important



- Alongside the vaccine roll-out, finds the one in three people who are infectious but have no symptoms

R number



- Keeps the R number in check
- Avoids future lockdowns

What you should consider:



Sign up to workplace testing

For >50 people: www.gov.uk/get-workplace-coronavirus-tests

For <50 people: Visit your local authority website. Postcode checker on gov.uk



Engage your workforce



Plan ahead to navigate your business out of the pandemic as national restrictions lift