

Figure 5-11: Traffic Flow Changes 2042 Do Minimum vs Base Year (IP)

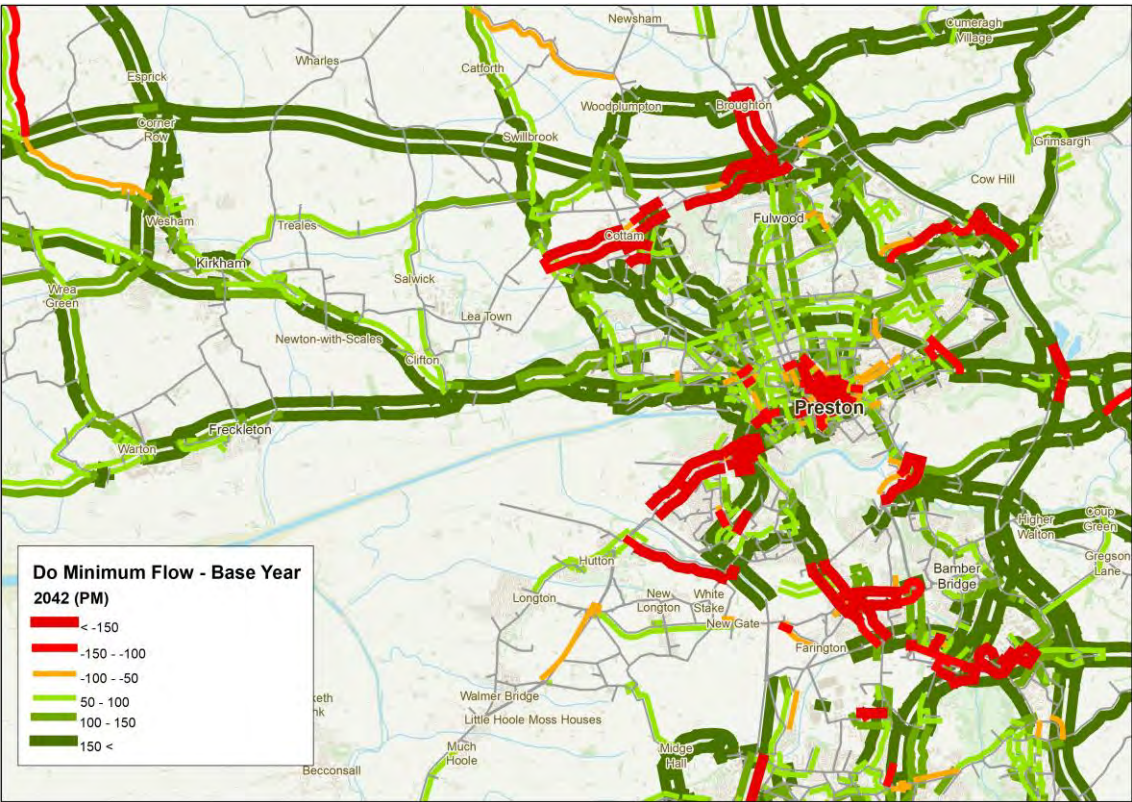


Figure 5-12: Traffic Flow Changes 2042 Do Minimum vs Base Year (PM)



Appendix E and the figures above clearly show a general increase (green bands) in traffic on most routes, with the Strategic Road network showing the largest absolute increase, as would be expected.

However, there are a number of notable exceptions, indicated in Red, which represent roads relieved by the new schemes such as Broughton Bypass, Penwortham Bypass, A582 dualling and East West Link Road being incorporated and resulting in shift of traffic to other routes. In addition, schemes in central Preston, around Fishergate and University of Central Lancashire (UCLan), as well as improvements at M55 J3 are also expected to reduce flows on the surrounding roads.

The flow reduction on B5254 Leyland Road to the south of Preston can be attributed to the implementation of Cross Borough Link Road, connecting B5254 Leyland Road and A6 in Lostock Hall. The flow re-routes from Leyland road to the A582 and A6 to access the motorway or travel further south.

## 5.6 Delay and Journey Time Changes from Base Year

Similar to traffic flow changes, changes in traffic delays expected in the future are illustrated in the images below.

These show forecast delay changes (over 15 seconds) from the base year to 2022, 2037 and 2042.

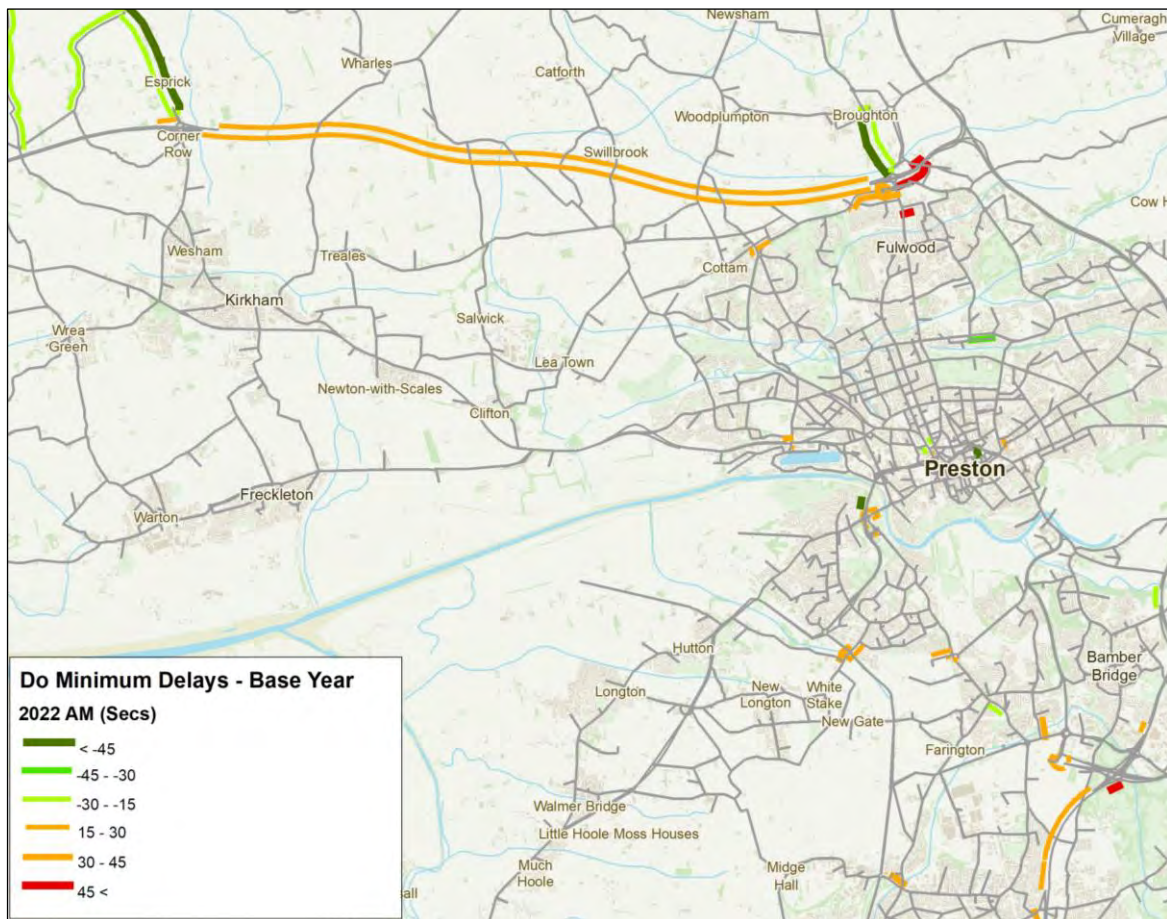


Figure 5-13: Traffic Delay Changes 2022 Do Minimum vs Base Year (AM)

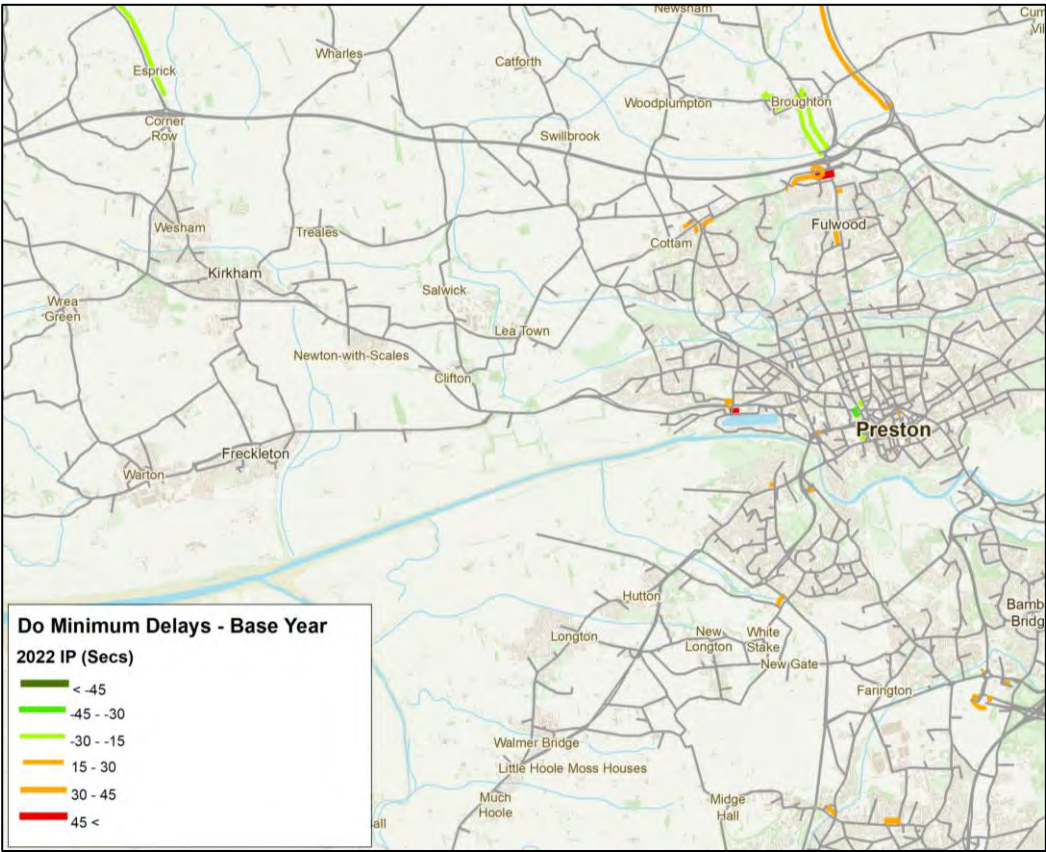


Figure 5-14: Traffic Delay Changes 2022 Do Minimum vs Base Year (IP)

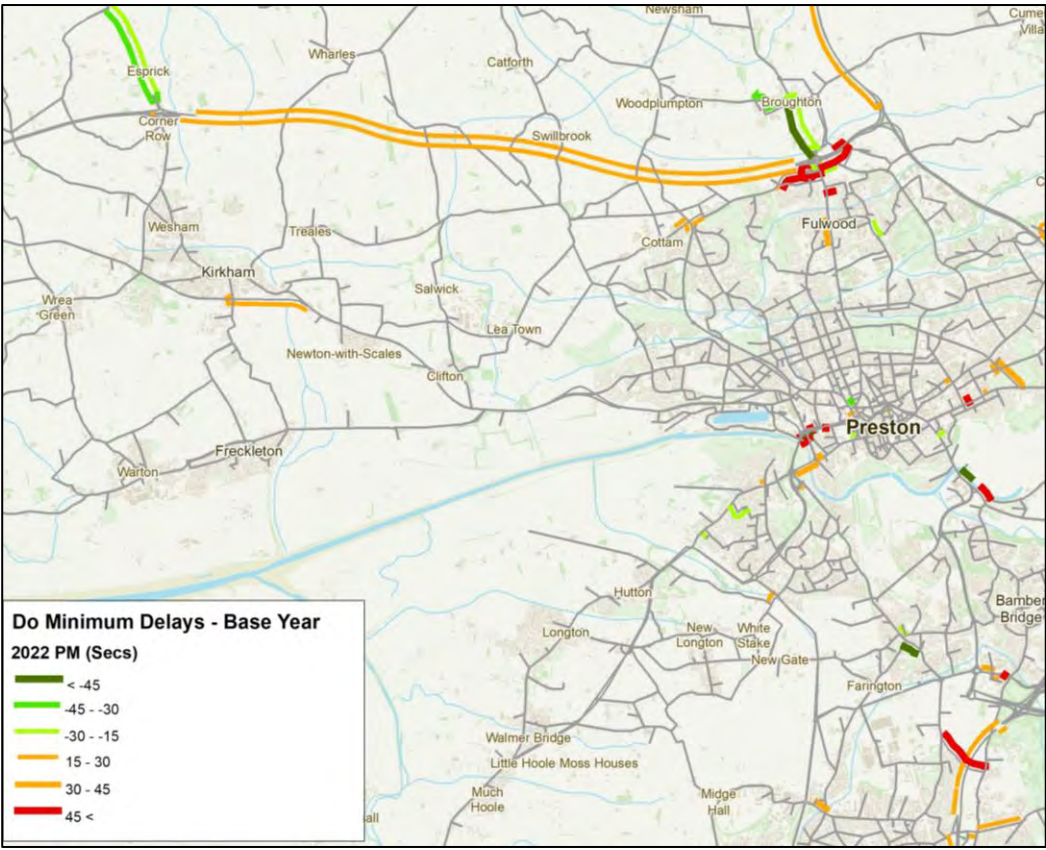


Figure 5-15: Traffic Delay Changes 2022 Do Minimum vs Base Year (PM)



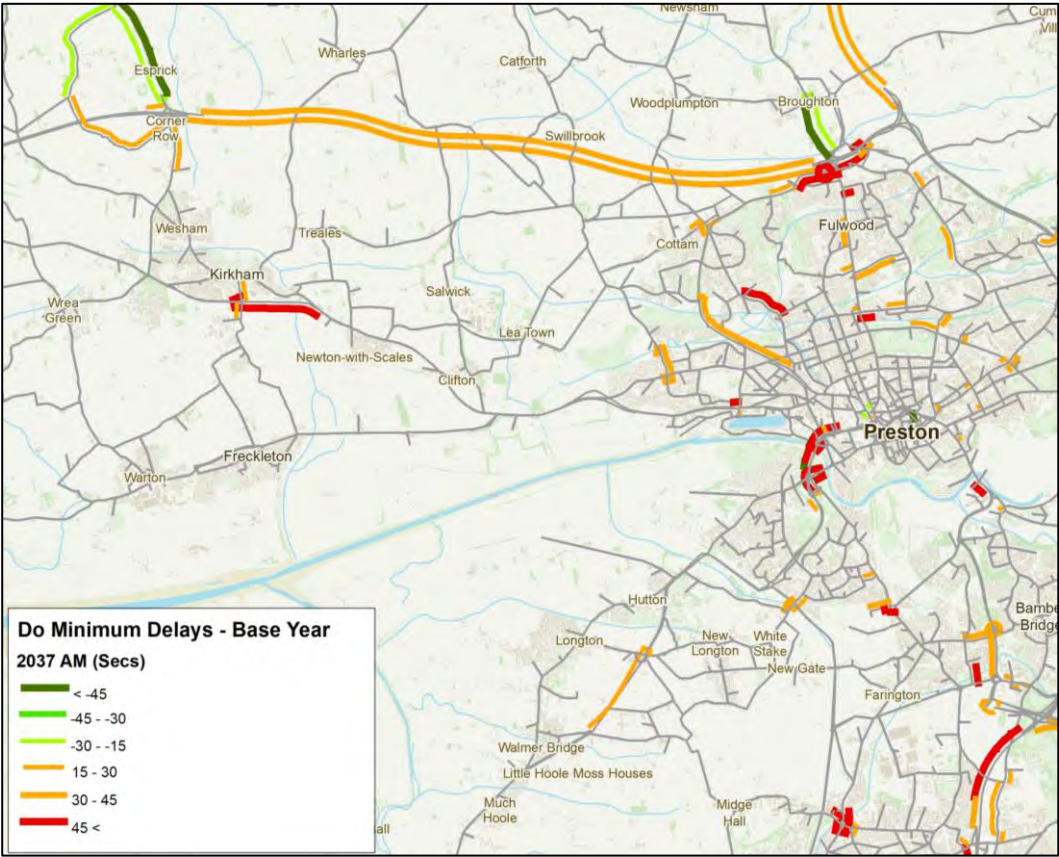


Figure 5-16: Traffic Delay Changes 2037 Do Minimum vs Base Year (AM)

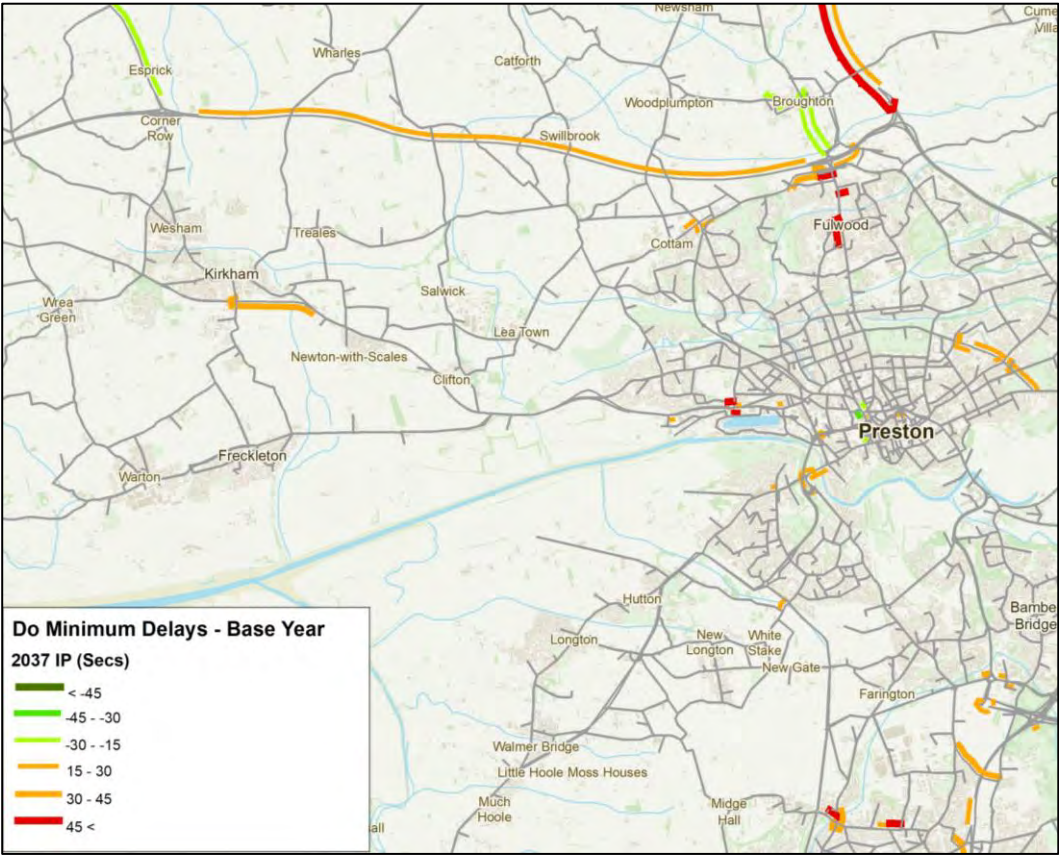


Figure 5-17: Traffic Delay Changes 2037 Do Minimum vs Base Year (IP)



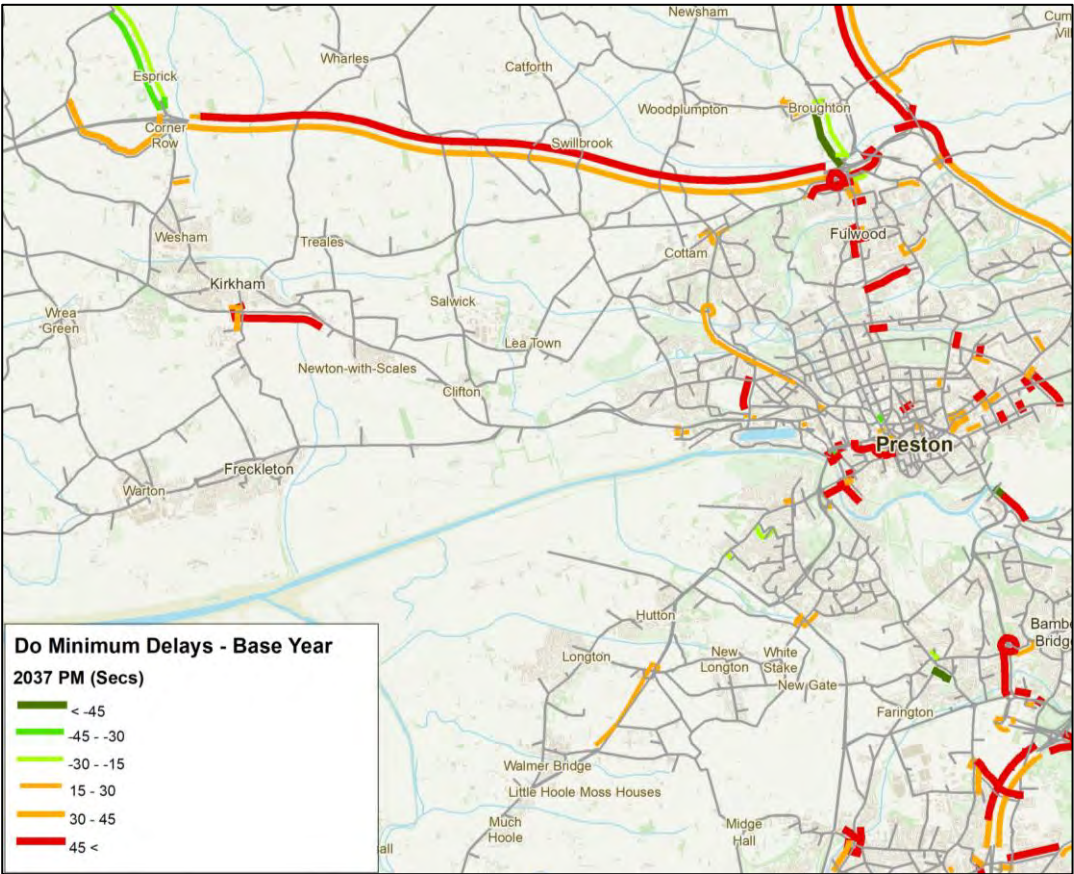


Figure 5-18: Traffic Delay Changes 2037 Do Minimum vs Base Year (PM)

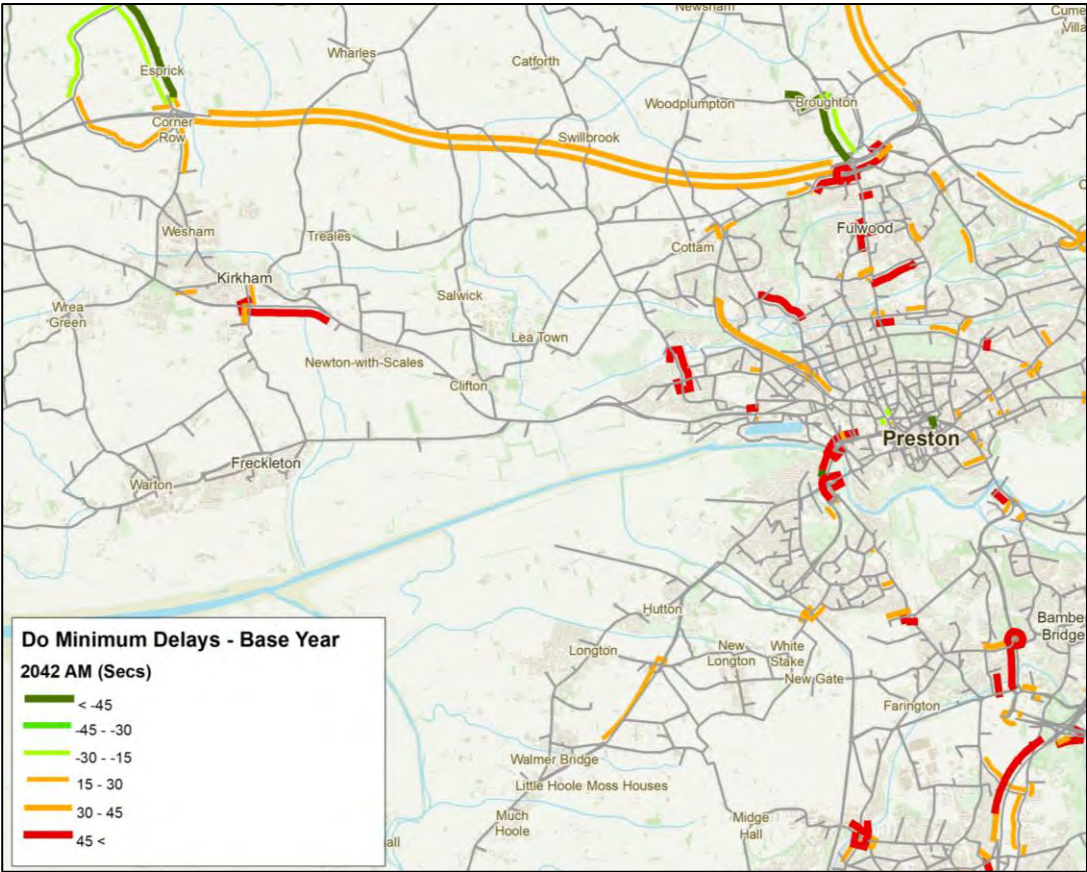


Figure 5-19: Traffic Delay Changes 2042 Do Minimum vs Base Year (AM)



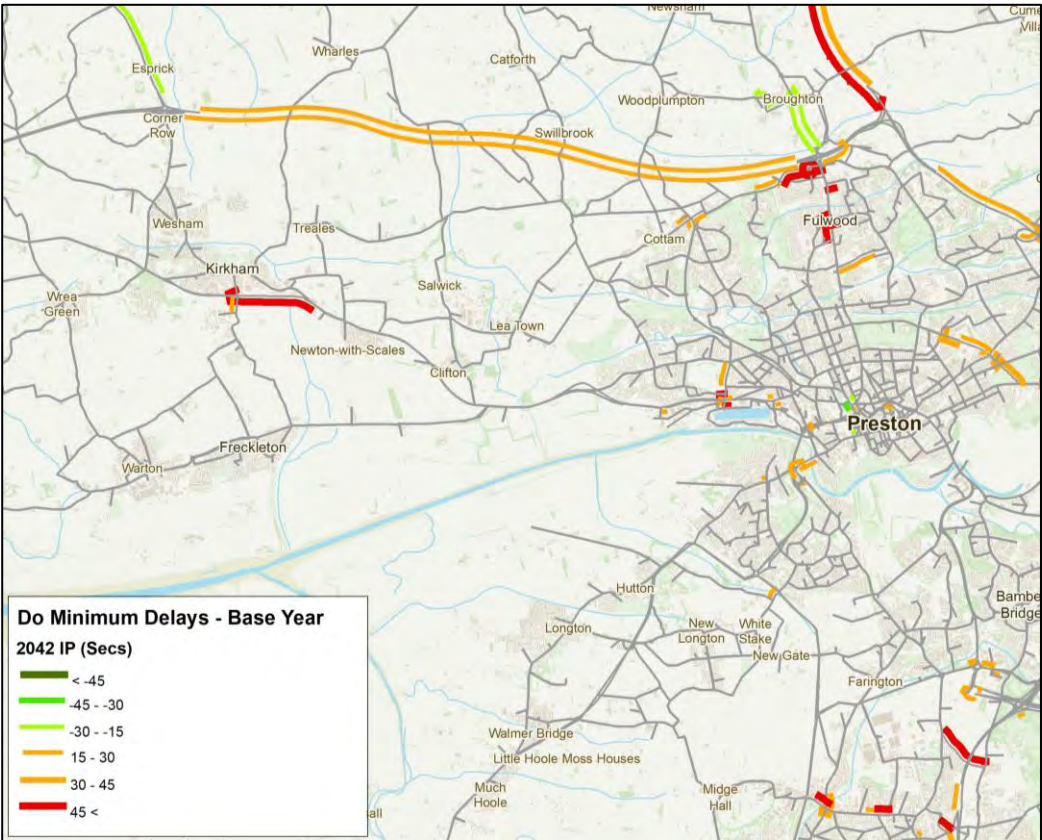


Figure 5-20: Traffic Delay Changes 2042 Do Minimum vs Base Year (IP)

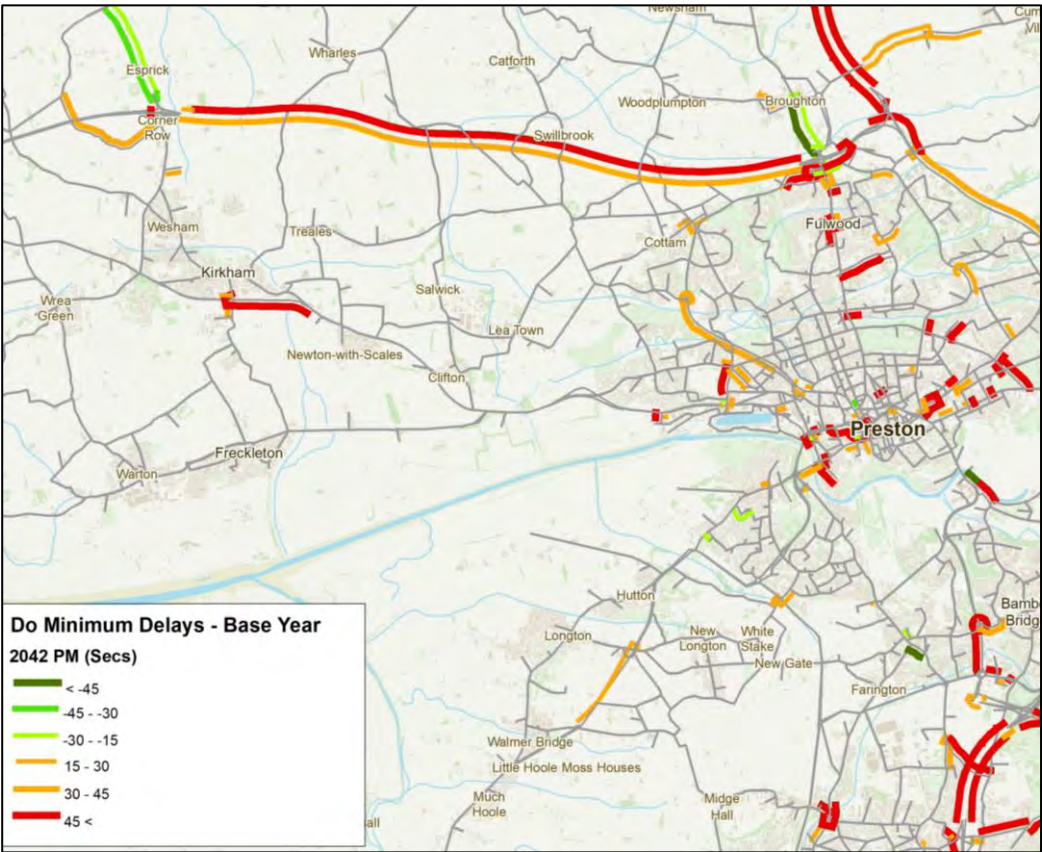


Figure 5-21: Traffic Delay Changes 2042 Do Minimum vs Base Year (PM)

The figures above show that there are some increases and decreases in delays in 2022 due to a combination of traffic growth and introduction of new schemes (especially Broughton Bypass and Penwortham Bypass).

In 2037 and 2042 increases in delays are more pronounced, especially in the peak on arterial routes to/from Preston, and those within Preston such as the A6 and A5085.

This clearly demonstrates that without the scheme, the existing network in and around Preston will experience severe delays by 2037 even with the planned improvements in Broughton, Penwortham and along the A582 corridor. The M55 J1, junctions along the A6 and A583/Freckleton junction are a few which are expected to experience a higher level of delay in forecast years.

The changes in delay are consistent with the changes in journey times. Table 5-H below shows the difference in journey times between the base year and future modelled years without the scheme. The journey time routes are shown in Figure 5-47. The journey times along the majority of routes, except the A584 Warton to A583, are expected to increase in the forecast years. Insignificant change of journey time on this section of the A584 is due to the junction improvements along the corridor.

Table 5-H: Journey Time Changes (in seconds) Do Minimum vs Base Year

	Base year			2022			Difference			2037			Difference			2042			Difference		
Route	AM	IP	PM	AM	IP	PM	AM	IP	PM	AM	IP	PM	AM	IP	PM	AM	IP	PM	AM	IP	PM
<b>M6 (J27 to J33)</b>																					
Southbound	1633	1624	1743	1709	1693	1928	76	69	185	1817	1805	2123	184	181	380	1861	1861	2177	227	237	434
Northbound	1782	1610	1687	1893	1673	1808	111	63	121	2147	1797	2026	365	186	338	2228	1840	2090	446	230	403
<b>M55 (M6 J32 to west of M55 J3)</b>																					
Eastbound	534	526	538	551	535	567	18	9	29	577	553	627	43	27	89	584	558	639	50	32	101
Westbound	545	525	540	569	531	561	24	6	22	594	546	585	49	21	45	600	550	586	55	25	47
<b>A583 (M55 J3 to A59)</b>																					
Southbound	1233	1163	1484	1322	1260	1490	90	96	6	1366	1318	1725	133	155	241	1378	1326	1764	146	163	280
Northbound	1320	1126	1360	1363	1249	1432	43	123	72	1510	1303	1540	190	177	180	1548	1320	1575	228	195	215
<b>A5085 (A583 to A6)</b>																					
Eastbound	552	532	573	562	539	585	10	7	12	579	547	600	27	15	27	586	550	606	34	18	33
Westbound	600	581	580	606	589	587	7	8	8	620	600	599	21	19	20	630	604	605	30	23	25
<b>A584 (Warton to A583)</b>																					
Eastbound	478	456	515	478	462	504	0	6	-12	483	466	515	5	10	0	486	468	520	8	11	4
Westbound	521	478	526	521	481	519	-1	2	-6	534	485	528	13	6	2	539	487	530	18	8	5
<b>A6 (M55 J1 to New Hall Lane)</b>																					
Southbound	827	782	880	858	812	909	32	31	29	906	845	971	79	63	91	922	856	989	95	74	109
Northbound	905	836	944	911	891	1015	6	55	70	988	983	1143	83	147	198	1010	1000	1177	105	164	232